

ALUMINIUM SUPPORT SYSTEM FOR RAINSCREEN CLADDING XKELEX X-CS25

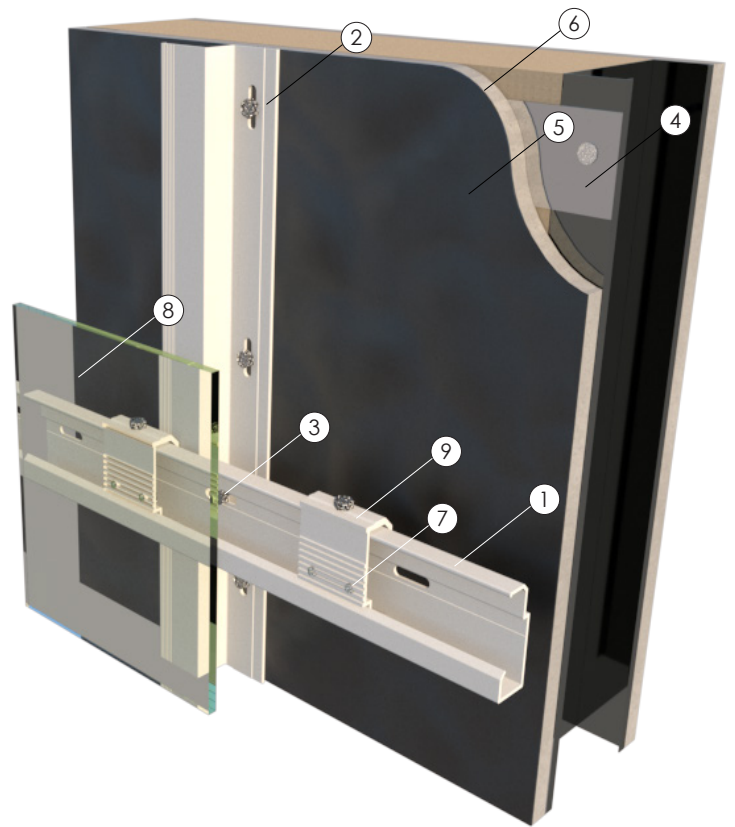


LEGEND

1. X-RL25 Rail
2. X-Z25 Profile
3. Rail Anchor
4. Steel Backing Plate
5. A/V Barrier
6. Exterior Wall
7. T U Anchor
8. Exterior Panel
9. Hanger Clip 25

CONTENT

- | | |
|---------|----------------------------|
| CS25-00 | Xkelex System detail sheet |
| CS25-01 | Profiles |
| CS25-02 | Building Elevation |
| CS25-03 | Vertical Panel Joint |
| CS25-04 | Vertical Mid Panel |
| CS25-05 | Window Jamb |
| CS25-06 | Door Jamb |
| CS25-07 | Inside Corner |
| CS25-08 | Outside Corner |
| CS25-09 | Window Head |
| CS25-10 | Horizontal Panel Joint |
| CS25-11 | Window Sill |
| CS25-12 | Base Detail |



NOTES:



SYSTEM:

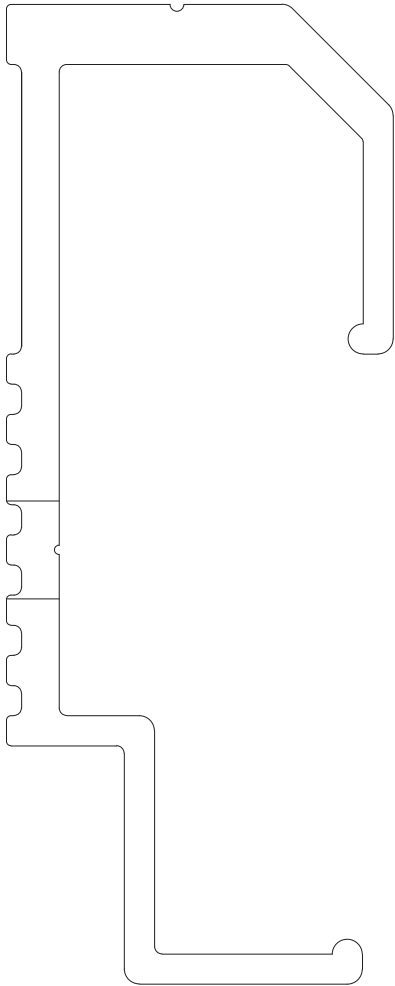
X-CS25

DETAIL:

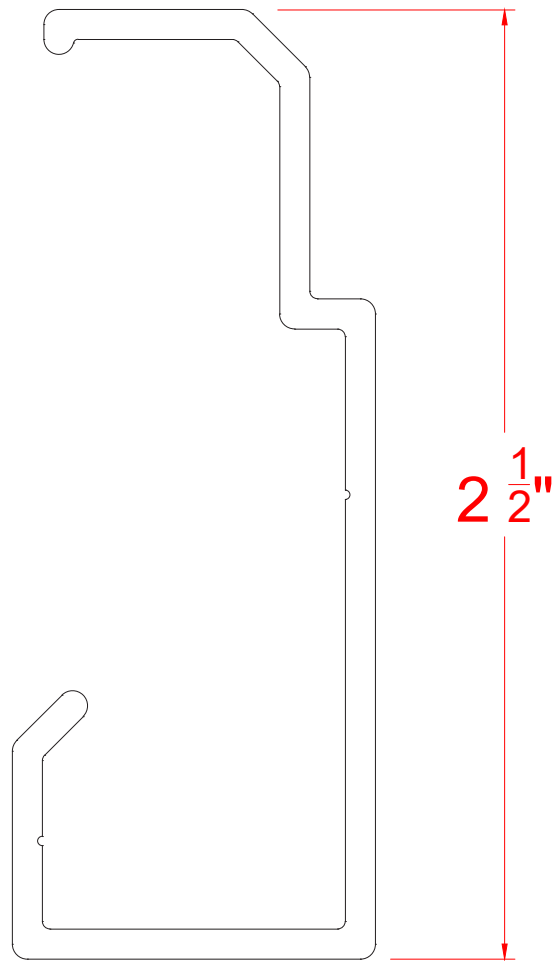
XKELEX SYSTEM

DETAIL SHEET:

CS25-00



HANGER CLIP 25



X-RL25 RAIL

NOTES:



SYSTEM:

X-CS25

DETAIL:

PROFILES

DETAIL SHEET:

CS25-01



NOTES:



SYSTEM:

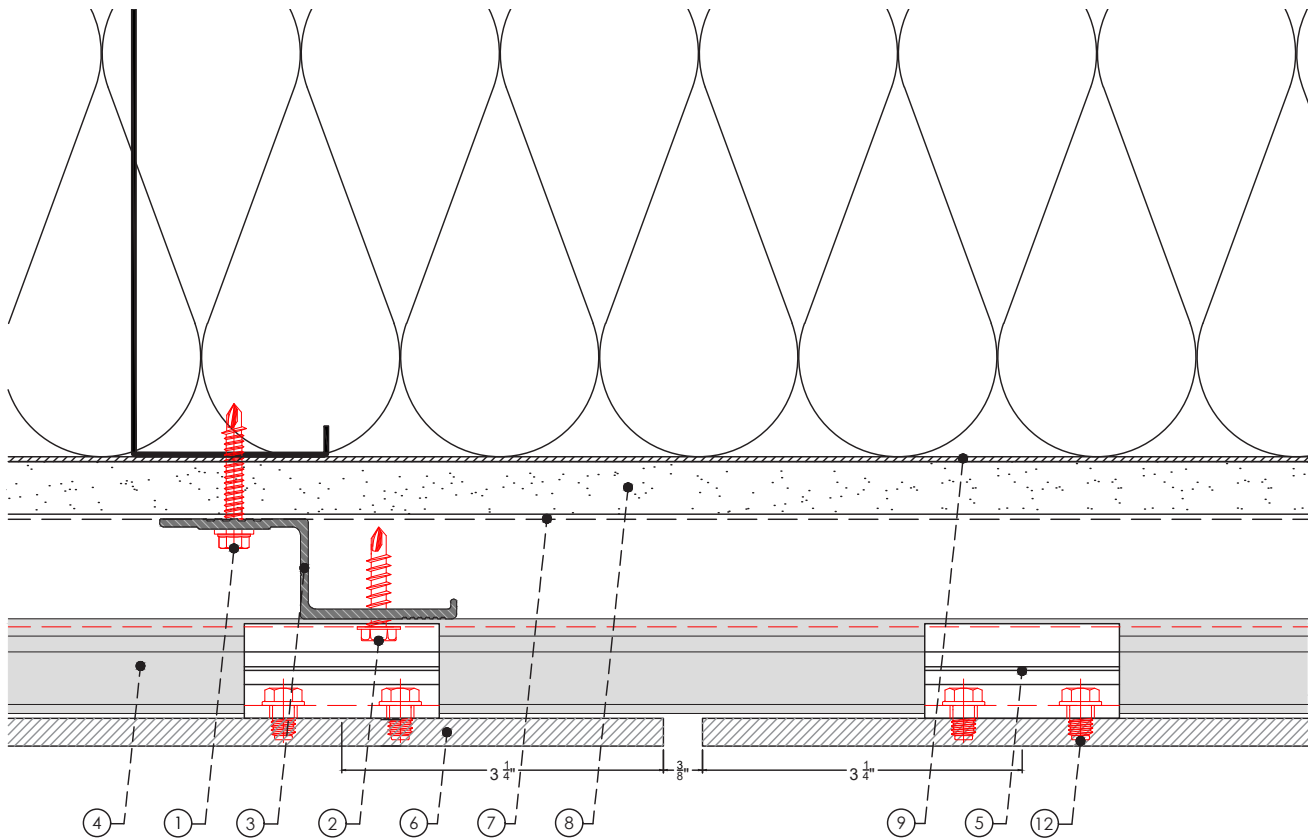
X-CS25

DETAIL:

BUILDING ELEVATION

DETAIL SHEET:

CS25-02



LEGEND

- | | |
|--------------------------|-----------------------------------|
| ① Wall anchor | ⑨ Steel Backing Plate as required |
| ② Rail anchor | ⑩ End profile by others |
| ③ X-Z25 profile | ⑪ Vent Screen 40% perf. |
| ④ X-RL25 horizontal rail | ⑫ T U Anchor |
| ⑤ Hanger Clip 25 | ⑬ Hanger Clip with leveler |
| ⑥ Exterior panel 10-13mm | ⑭ Level Screw |
| ⑦ A/V Barrier | ⑮ Fixing Screw |
| ⑧ Exterior Wall | |

NOTES:



SYSTEM:

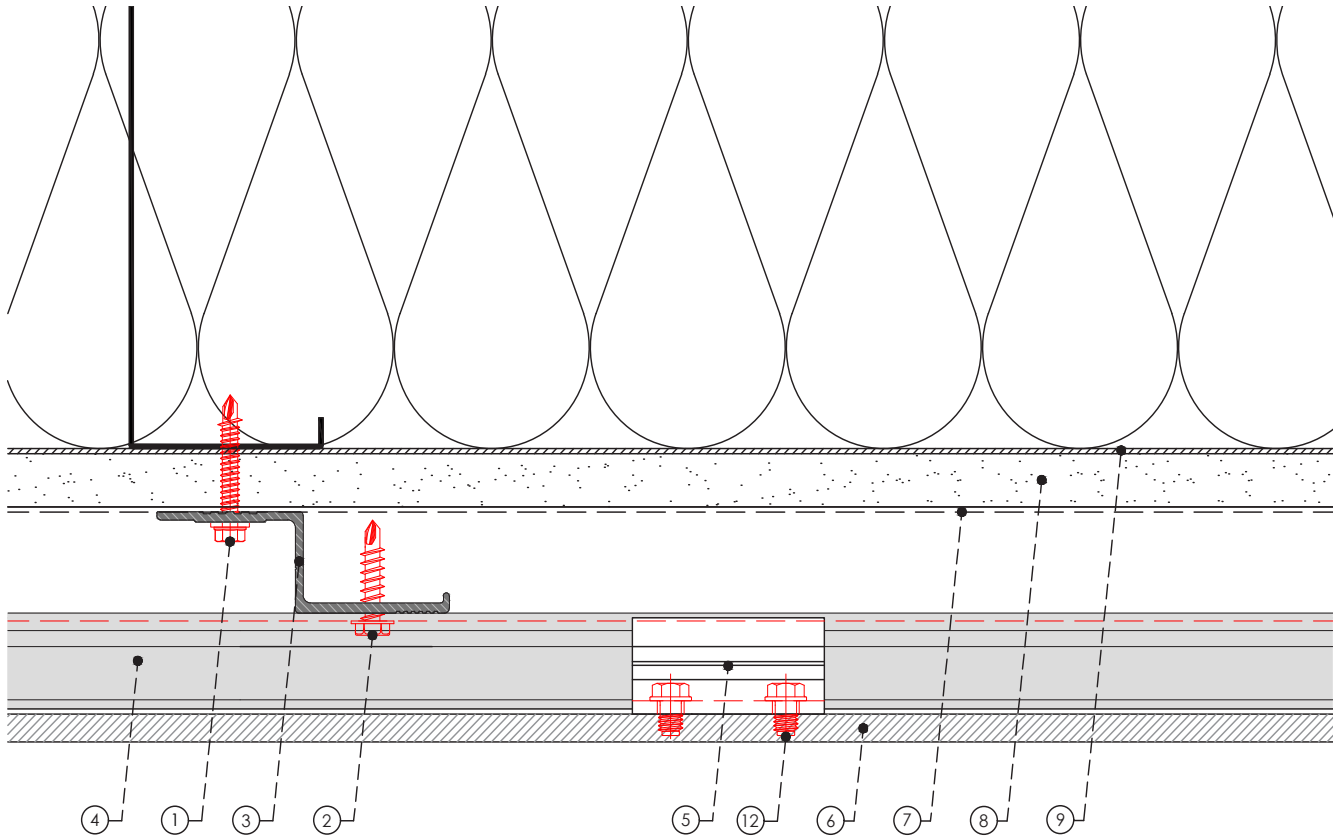
X-CS25

DETAIL:

PLAN VIEW VERTICAL PANEL JOINT

DETAIL SHEET:

CS25-03



LEGEND

- | | |
|--------------------------|-----------------------------------|
| ① Wall anchor | ⑨ Steel Backing Plate as required |
| ② Rail anchor | ⑩ End profile by others |
| ③ X-Z25 profile | ⑪ Vent Screen 40% perf. |
| ④ X-RL25 horizontal rail | ⑫ T U Anchor |
| ⑤ Hanger Clip 25 | ⑬ Hanger Clip with leveler |
| ⑥ Exterior panel 10-13mm | ⑭ Level Screw |
| ⑦ A/V Barrier | ⑮ Fixing Screw |
| ⑧ Exterior Wall | |

NOTES:



SYSTEM:

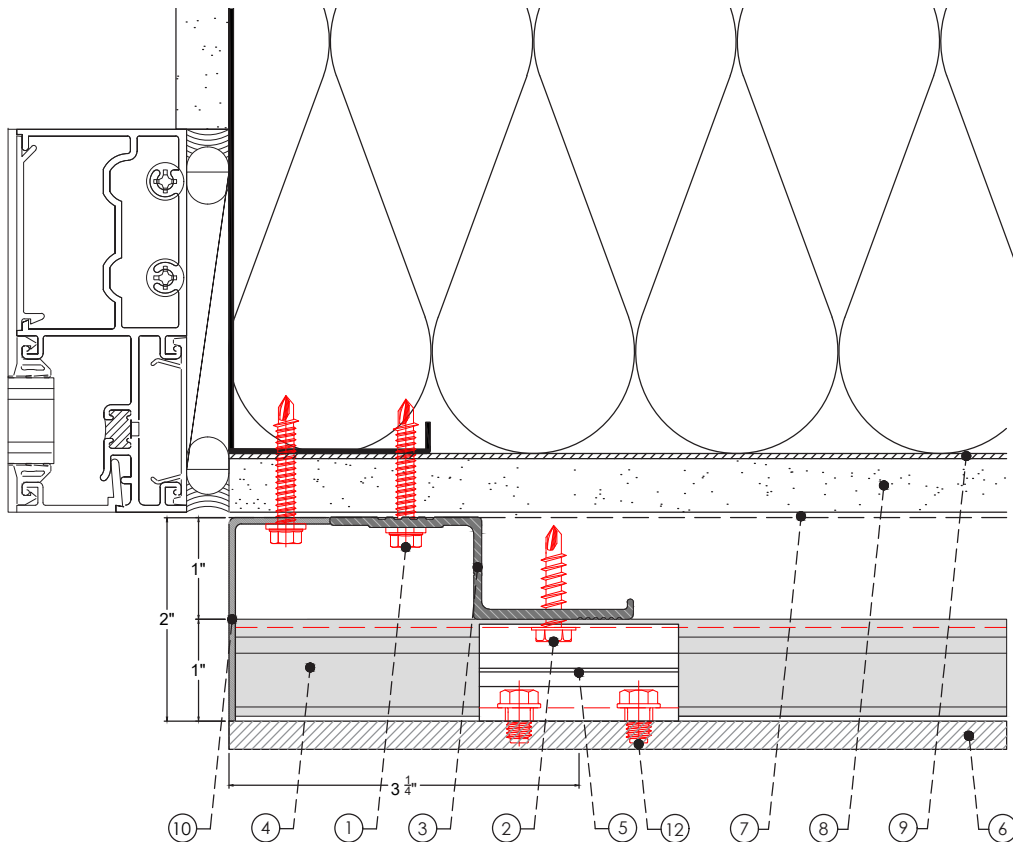
X-CS25

DETAIL:

PLAN VIEW MID PANEL

DETAIL SHEET:

CS25-04



LEGEND

- | | |
|--------------------------|-----------------------------------|
| ① Wall anchor | ⑨ Steel Backing Plate as required |
| ② Rail anchor | ⑩ End profile by others |
| ③ X-Z25 profile | ⑪ Vent Screen 40% perf. |
| ④ X-RL25 horizontal rail | ⑫ T U Anchor |
| ⑤ Hanger Clip 25 | ⑬ Hanger Clip with leveler |
| ⑥ Exterior panel 10-13mm | ⑭ Level Screw |
| ⑦ A/V Barrier | ⑮ Fixing Screw |
| ⑧ Exterior Wall | |

NOTES:



SYSTEM:

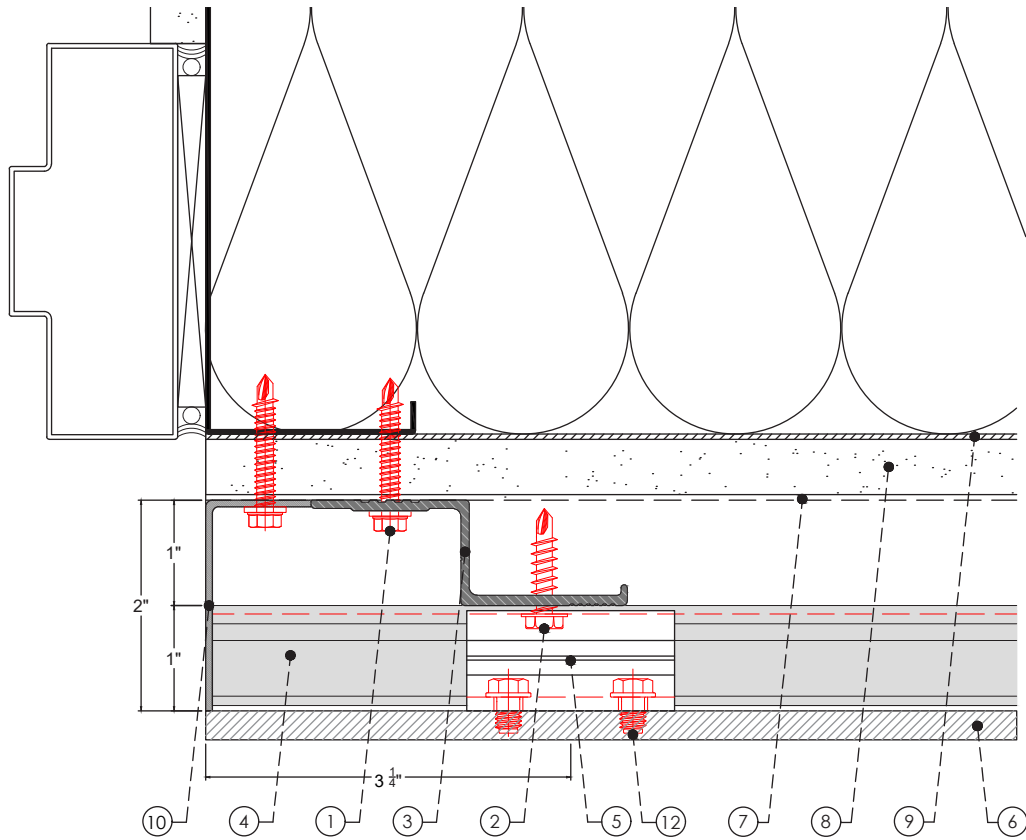
X-CS25

DETAIL:

PLAN VIEW WINDOW JAMB

DETAIL SHEET:

CS25-05



LEGEND

- | | |
|--------------------------|-----------------------------------|
| ① Wall anchor | ⑨ Steel Backing Plate as required |
| ② Rail anchor | ⑩ End profile by others |
| ③ X-Z25 profile | ⑪ Vent Screen 40% perf. |
| ④ X-RL25 horizontal rail | ⑫ T U Anchor |
| ⑤ Hanger Clip 25 | ⑬ Hanger Clip with leveler |
| ⑥ Exterior panel 10-13mm | ⑭ Level Screw |
| ⑦ A/V Barrier | ⑮ Fixing Screw |
| ⑧ Exterior Wall | |

NOTES:



SYSTEM:

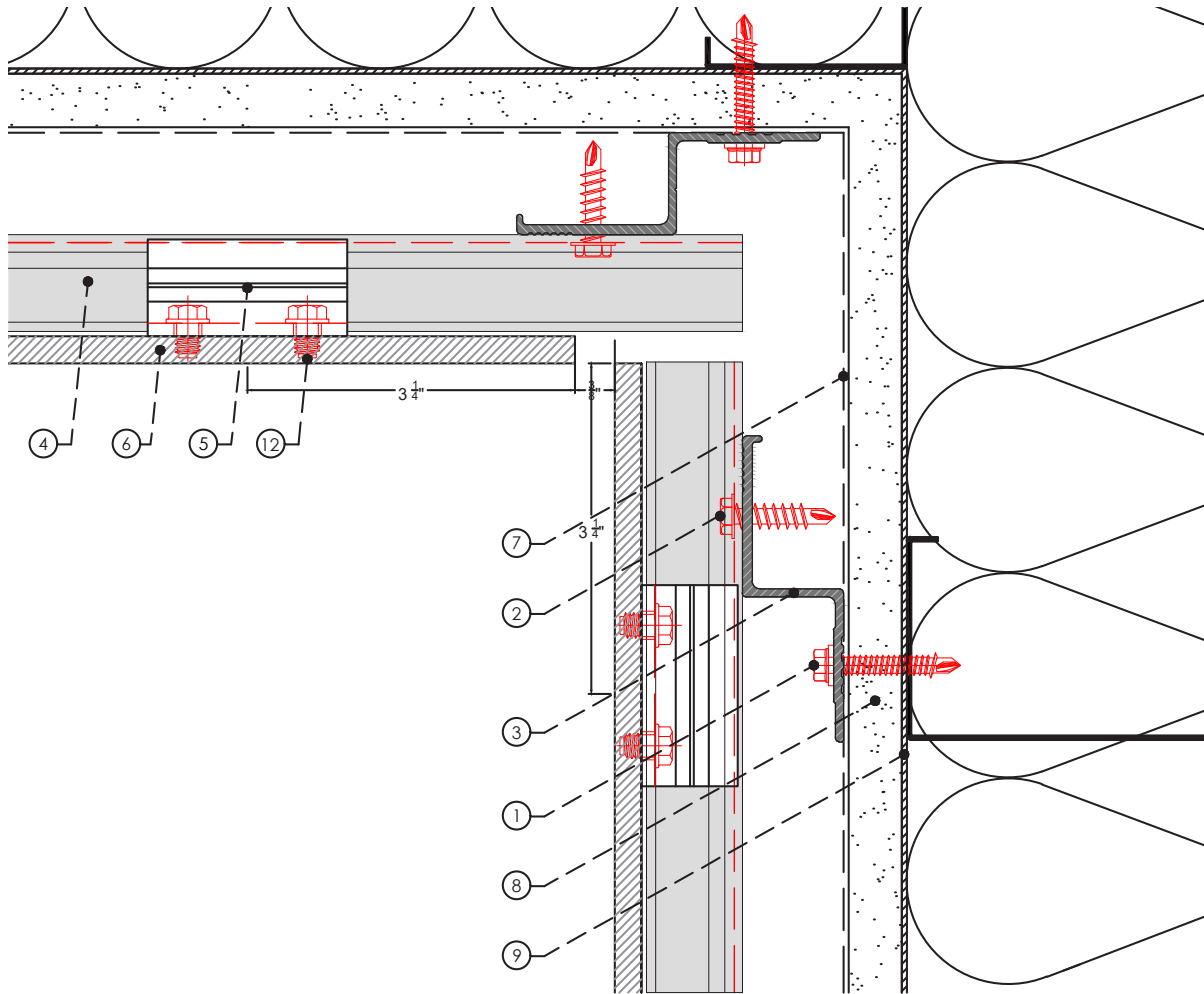
X-CS25

DETAIL:

PLAN VIEW DOOR JAMB

DETAIL SHEET:

CS25-06



LEGEND

- | | |
|--------------------------|-----------------------------------|
| ① Wall anchor | ⑨ Steel Backing Plate as required |
| ② Rail anchor | ⑩ End profile by others |
| ③ X-Z25 profile | ⑪ Vent Screen 40% perf. |
| ④ X-RL25 horizontal rail | ⑫ T U Anchor |
| ⑤ Hanger Clip 25 | ⑬ Hanger Clip with leveler |
| ⑥ Exterior panel 10-13mm | ⑭ Level Screw |
| ⑦ A/V Barrier | ⑮ Fixing Screw |
| ⑧ Exterior Wall | |

NOTES:



SYSTEM:

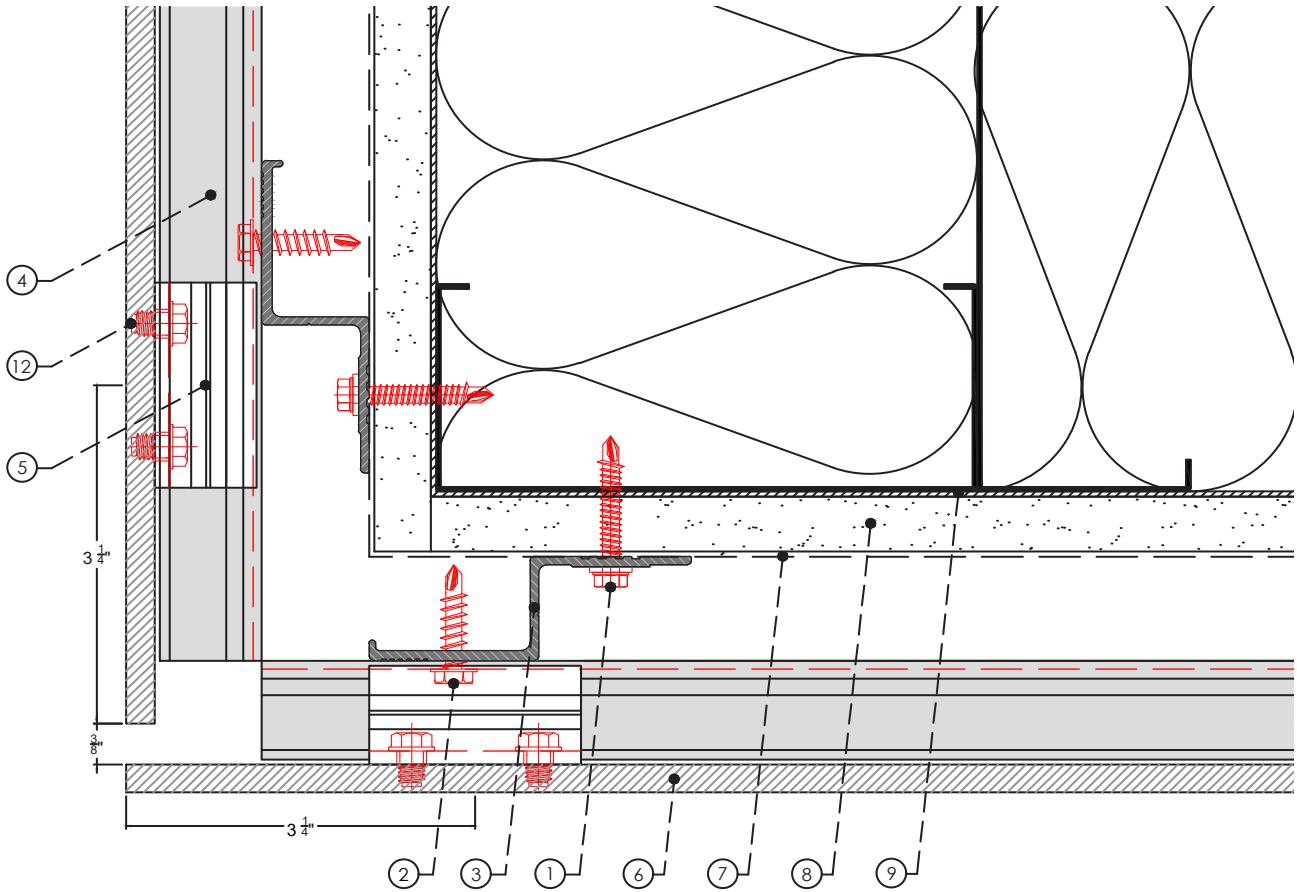
X-CS25

DETAIL:

PLAN VIEW INSIDE CORNER

DETAIL SHEET:

CS25-07



LEGEND

- | | |
|--------------------------|-----------------------------------|
| ① Wall anchor | ⑨ Steel Backing Plate as required |
| ② Rail anchor | ⑩ End profile by others |
| ③ X-Z25 profile | ⑪ Vent Screen 40% perf. |
| ④ X-RL25 horizontal rail | ⑫ T U Anchor |
| ⑤ Hanger Clip 25 | ⑬ Hanger Clip with leveler |
| ⑥ Exterior panel 10-13mm | ⑭ Level Screw |
| ⑦ A/V Barrier | ⑮ Fixing Screw |
| ⑧ Exterior Wall | |

NOTES:



SYSTEM:

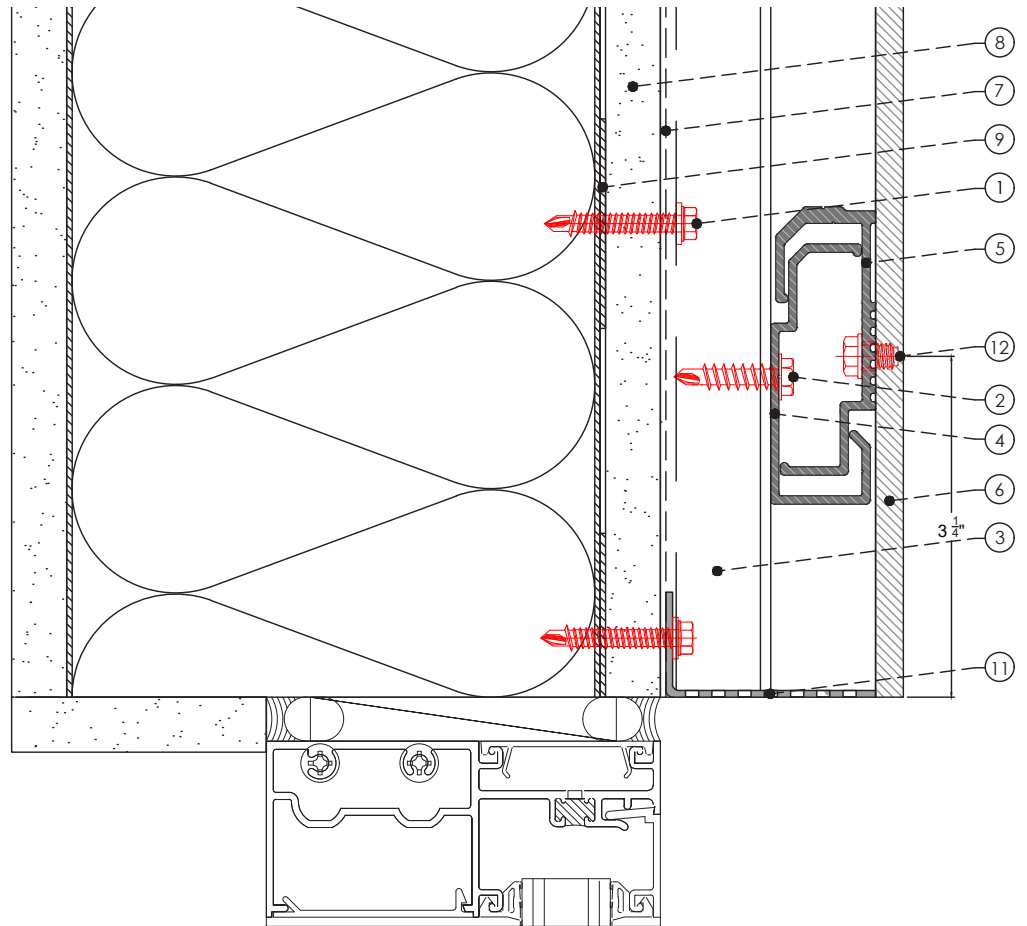
X-CS25

DETAIL:

PLAN VIEW OUTSIDE CORNER

DETAIL SHEET:

CS25-08



LEGEND

- | | |
|--------------------------|-----------------------------------|
| ① Wall anchor | ⑨ Steel Backing Plate as required |
| ② Rail anchor | ⑩ End profile by others |
| ③ X-Z25 profile | ⑪ Vent Screen 40% perf. |
| ④ X-RL25 horizontal rail | ⑫ T U Anchor |
| ⑤ Hanger Clip 25 | ⑬ Hanger Clip with leveler |
| ⑥ Exterior panel 10-13mm | ⑭ Level Screw |
| ⑦ A/V Barrier | ⑮ Fixing Screw |
| ⑧ Exterior Wall | |

NOTES:



SYSTEM:

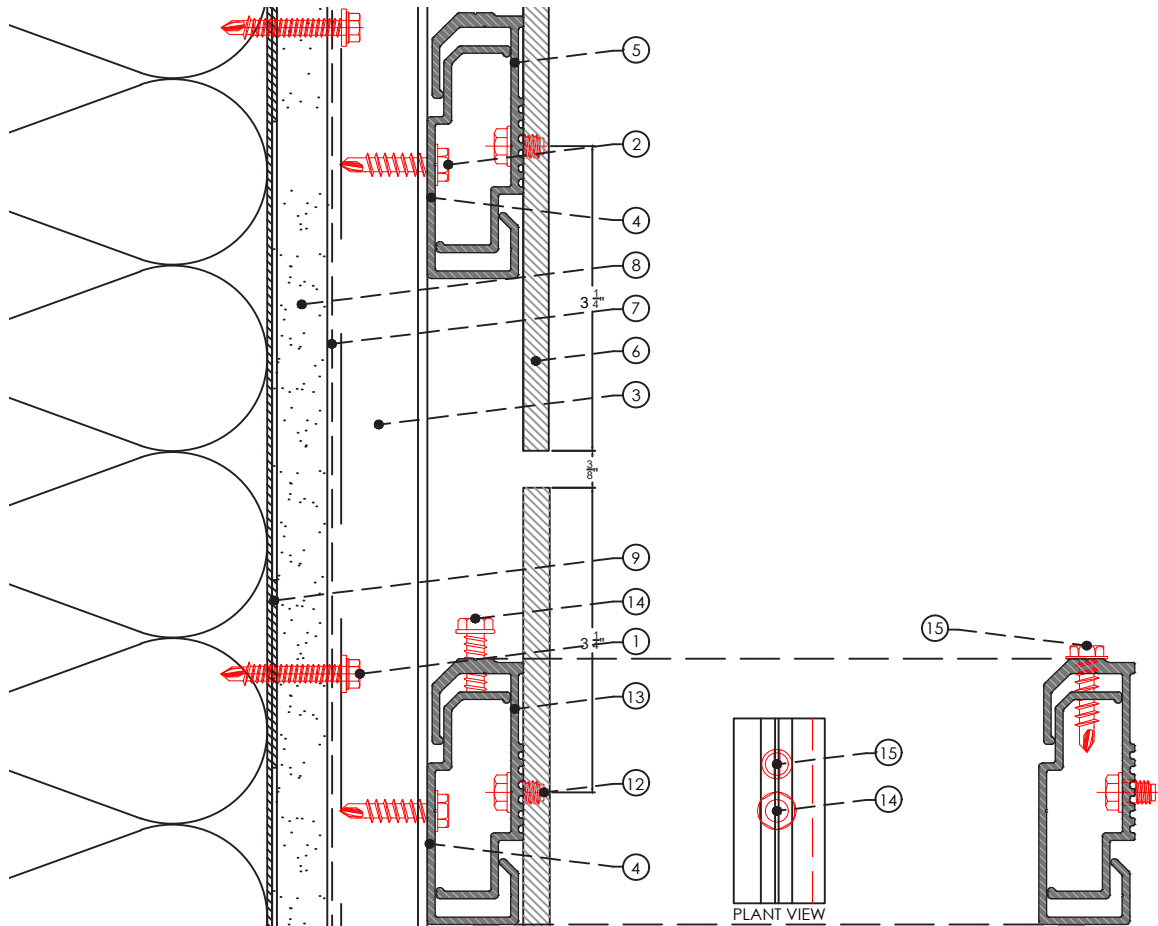
X-CS25

DETAIL:

SECTION WINDOW HEAD

DETAIL SHEET:

CS25-09



LEGEND

- | | |
|--------------------------|-----------------------------------|
| ① Wall anchor | ⑨ Steel Backing Plate as required |
| ② Rail anchor | ⑩ End profile by others |
| ③ X-Z25 profile | ⑪ Vent Screen 40% perf. |
| ④ X-RL25 horizontal rail | ⑫ T U Anchor |
| ⑤ Hanger Clip 25 | ⑬ Hanger Clip with leveler |
| ⑥ Exterior panel 10-13mm | ⑭ Level Screw |
| ⑦ A/V Barrier | ⑮ Fixing Screw |
| ⑧ Exterior Wall | |

NOTES:



SYSTEM:

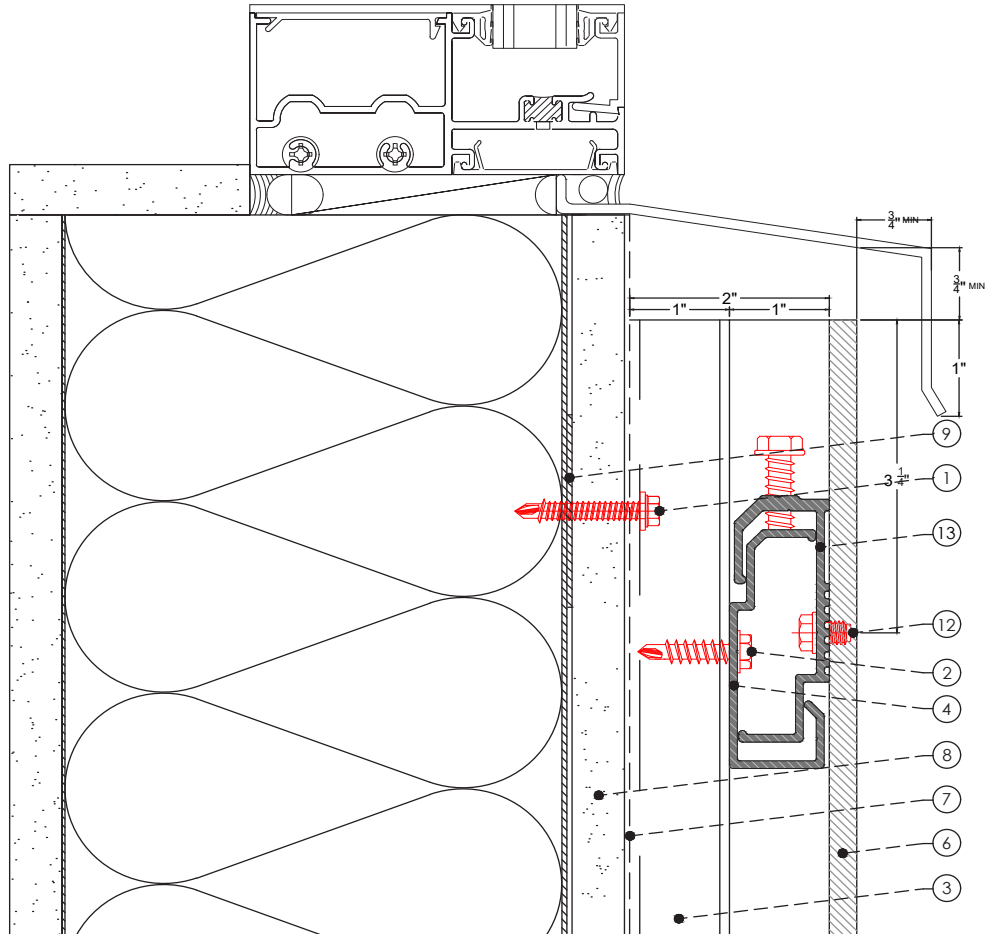
X-CS25

DETAIL:

SECTION HORIZONTAL PANEL JOINT

DETAIL SHEET:

CS25-10



LEGEND

- | | |
|--------------------------|-----------------------------------|
| ① Wall anchor | ⑨ Steel Backing Plate as required |
| ② Rail anchor | ⑩ End profile by others |
| ③ X-Z25 profile | ⑪ Vent Screen 40% perf. |
| ④ X-RL25 horizontal rail | ⑫ T U Anchor |
| ⑤ Hanger Clip 25 | ⑬ Hanger Clip with leveler |
| ⑥ Exterior panel 10-13mm | ⑭ Level Screw |
| ⑦ A/V Barrier | ⑮ Fixing Screw |
| ⑧ Exterior Wall | |

NOTES:



SYSTEM:

X-CS25

DETAIL:

SECTION WINDOW SILL

DETAIL SHEET:

CS25-11

